

Panasonic

LASER Printer

KX-P7100 Series

An affordable, fully featured Laser Printer!! Fast, high quality printing for home and office!!

Panasonic's KX-P7100 series is solution to your needs.
Affordable, high-quality, laser printing is within your grasp!!



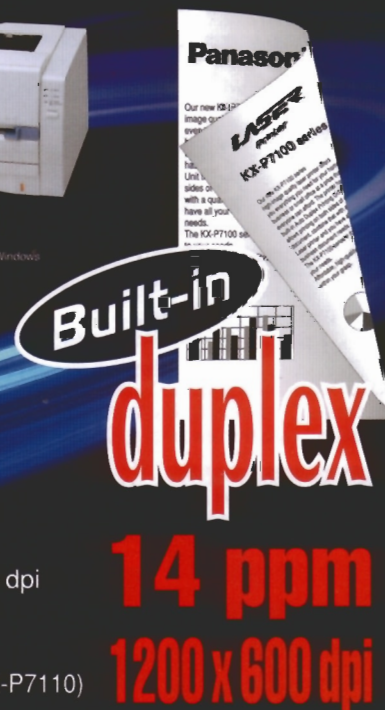
KX-P7110
PCL 6 Emulation + Network
This KX-P7110 is shown with the optional 2nd feeder.



KX-P7105
PCL 6 Emulation



KX-P7100
for Windows
Windows is Microsoft Windows operating system



High Speed Printing : 14 ppm
High Resolution : 600 x 600 dpi / 1200 x 600 dpi
Built-in Auto Duplex Printing Unit standard
Environmentally Friendly Design
PostScript upgradable with option(KX-P7105 / KX-P7110)

(KX-P7100 : 600 x 600 dpi)

THE PANASONIC AFFORDABLE LASER PRINTER

LASER Printer

KX-P7100 Series

Panasonic KX-P7100 Series, the family of 14 ppm workgroup laser printers

Our new KX-P7100 series high-image quality laser printer offers you everything you need for your home business or small office at a price that everyone can afford. The printer has a built-in Auto Duplex Printing Unit that allows printing on both sides of a document, combine that with a quality Laser printer and you have all your business document needs.

The KX-P7100 series is the solution to your needs.

Affordable, high-quality, laser printing is within your grasp.

Outstanding Features with Built-in Quality

Superb Print Quality

High image quality laser printing for crisp, professional looking documents.

Fast Printing

KX-P7100 series prints at 14 pages per minute.
Warm up time: Less than 25 seconds. (at 22 °C, 50% RH)

14 ppm

Simple Installation and Easy Operation

You can install the printer driver easily, and print your document without complicated settings. Graphic display messages on your PC monitor the printer's status and operation. Whenever you need to see the print status, you can view it on the printing console display. Just drag and drop the help box onto your determined items, and the help function will guide you through the print problem virtually.

Save on cost & Environmentally Friendly Design

KX-P7100 series offers not only low priced consumables (toner, drum), but also the following cost saving functions:

Saving on Power

To conserve energy and reduce operating costs, these printers are provided with a power save feature. If the printer has not received data for 2 minutes, the printer will automatically enter the power saving mode.

Saving on toner

The printer will reduce the amount of toner used to print. This feature is especially useful for printing drafts before the final print.

Adaptable Paper Handling

Handles a range of media types including plain paper, envelopes, paper labels, transparencies, and heavy paper.

Large number of Paper Capacity

Optional 2nd feeder is available for KX-P7105 and KX-P7110. With this 2nd feeder installed, you can expand up to 800 sheet paper capacity. (Standard media tray 250 sheet + Optional 2nd feeder 550 sheets) You can be loaded large number of sheets for your workgroup users.



Standard Media Tray: 250 sheets
Optional 2nd feeder: 550 sheets
Total: 800 sheets



600 x 600 dpi

USB interface

14ppm

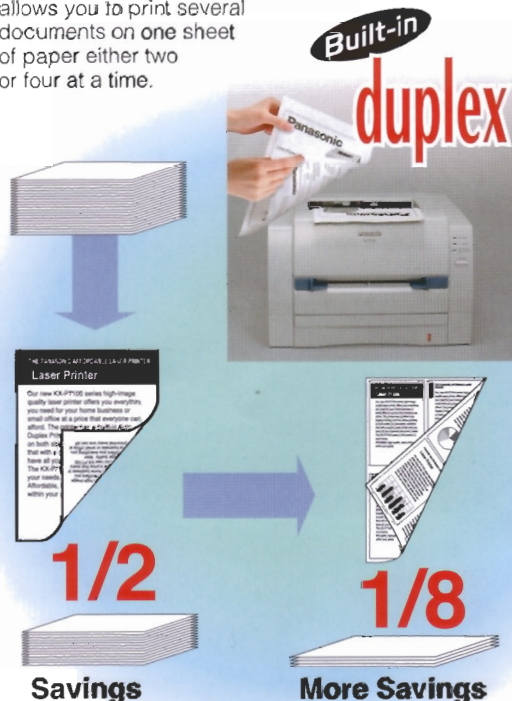
duplex

KX-P7100 for Windows

KX-P7100 is an entry-level laser printer that is optimized for Windows. The easy-to-use printer for Windows allows fast performance in a Windows operating system.

Saving on paper

Built-in ADU (Auto Duplex Printing Unit); Able to print on both sides of a piece of paper. 2UP/4UP: This allows you to print several documents on one sheet of paper either two or four at a time.





This KX-P7110 is shown with the optional 2nd feeder.

1200 x 600 dpi



KX-P7105 PCL 6 Emulation

KX-P7105 is a laser printer, which supports advanced PCL 6 emulation. Higher resolution printing (Max. 1,200 x 600 dpi), faster 100MHz RISC processor and standard 16 MB RAM will assure higher quality printings for you. As standard interfaces, it has IEEE 1284 parallel and USB 1.1 port. Optional items such as 2nd feeder which allows total of 800 paper stock, expandable memory up to 48 MB capacity and PostScript level 2 upgradability will meet your various printing needs.

1200 x 600 dpi



KX-P7110 PCL 6 Emulation + Network

KX-P7110 is a laser printer, which supports advanced PCL 6 emulation and comes Network ready. In addition to the KX-P7105, this printer supports Ethernet 10/100BaseT/TX network. In various network environments, whether they are single user or workgroup users, the KX-P7110 will provide you one of ideal network printing solutions.

Versatile Utility Software

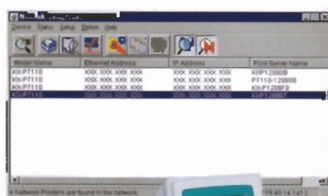
Wide variety of utility software come with Panasonic KX-P7100 series. These software help to enhance your document, configure, and manage your print device from your computers. These utility software provide you with the ability to reduce service calls and provide a way to manage your printer.



Remote Management on the Network Environment (only for KX-P7110)

Network Setup tool

On-line remote network setting can be done by Network Setup Tool. To setup the printer in your network environment, it is not necessary to leave your desk.

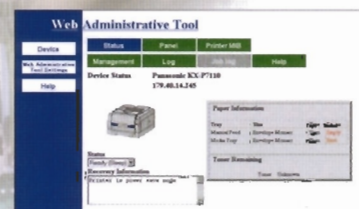


KX-P7110



Web Administrative Tool

The printer status can be seen from each client. No need to leave your desk to check printer's current status such as the condition of media tray, toner remaining, etc.



KX-P7110

It can print on HP's JetDirect Port printing, and you can also use some functions of JetAdmin/WebJetAdmin.

KX-P7100 Series Black and White Laser Printers



(This KX-P7110 is shown with the optional 2nd feeder.)

Basic Specification		KX-P7100 for Windows	KX-P7105 PCL6 emulation	KX-P7110 PCL6 emulation + Network
Print Method		Semiconductor Laser		
Print Speed		14 ppm (page per minute) A4 size plain paper, simplex, 5% image area		
Print Resolution		600 x 600 dpi	300 x 300 dpi, 600 x 600 dpi, 1,200 x 600 dpi	
Emulation		for Windows	PCL6	PostScript Level 2 (Option)
Processor		AT89C51 / W78E51	V850E1™ 100MHz (32 bit RISC CPU)	
RAM Memory		2 MB	16 MB (Up to 48MB)	16 MB (Up to 48MB)
Interface		Bi-directional Parallel, USB	IEEE1284, USB 1.1	IEEE1284, USB 1.1, 10/100BaseT/TX
Power Requirement		120 V / 220 - 240 V		
Power Consumption	Printing*1 (average):	310 W or less	345 W or less	
	Standby (average):	70 W or less	80 W or less	
	Power Saving (When the fan stops):	5.5W or less	11W or less	
Paper Input	Manual Feed:	1 sheet: Manual Feed		
	Media tray:	250 sheets: Media tray (75 g/m²)		
Paper Output		150 sheets face down (75 g/m²)		
Auto Duplex Printing		Standard		
Paper Handling	Media tray:	A4, Letter, Legal, B5, Executive, A5, A6, Transparency, Envelope		
	Manual Feed:	A4, Letter, Legal, B5, Executive, A5, A6, Transparency, Envelope, Label		
	Auto Duplex:	A4, Letter, Legal, B5, Executive		
Paper Weight	Media tray:	60 - 105 g/m²		
	Manual Feed:	60 - 165 g/m²		
	Auto Duplex:	75 - 90 g/m²		
Noise Level		49 dB(A): Printing / 37 dB(A): Standby		
Environment	Operating:	10 - 32.5 °C, 20% - 80% RH		
	Storage:	10 - 35 °C, 10% - 80% RH		
Dimension		399(W) x 390.5(D) x 254(H) mm		
Weight		Approx. 10kg		
Consumables and Option		KX-P7100	KX-P7105	KX-P7110
Toner Cartridge		KX-PDP8 (4,000 pages average)*2		
Drum Unit		KX-PDM7(20,000 pages average)*2		
2nd Feeder		-	KX-PMF3	
RAM16MB		-	KX-PEM12	
RAM32MB		-	KX-PEM13	
Upgrade Kit		-	KX-PPSU5(for PostScript)	

*1 Maximum print speed, duplex printing

*2 Average life at 5% image area with repetitive printing of 10 pages (Letter / A4 size, single-sided printing, default density)

Print Resolution (only for KX-P7105 / KX-P7110)	Network Environment (only for KX-P7110)	Interface	Print Speed	Auto Duplex Printing
1200 x 600 dpi	Network	USB interface	14ppm	Built-in duplex

- Microsoft®, Windows®, Windows NT® are either trademarks or registered trademarks of Microsoft Corporation in the United States and / or other countries.
- As an ENERGY STAR® Partner, Panasonic has determined that this product meets the ENERGY STAR® guidelines for energy efficiency.
- ENERGY STAR® is a U.S. registered mark.
- PostScript is a trademark of Adobe Systems Incorporation.
- V85CE1™ is a trademark of NEC Corporation.
- Web JetAdmin is a trademark of Hewlett-Packard Company.
- All trademarks referred to in this sheet are the property of their respective company.

Specifications are subject to change without notice.



Panasonic